

Utah State University
USU POLICE
2013 Annual Report

Department of Public Safety
5800 Old Main Hill, Logan, UT 84322
435-797-1939 www.dps.usu.edu

Table of Contents

Letter from the Chief of Police.....	2
Who We Are.....	3
Police.....	3
Dispatch, Security, Bomb Squad, Emergency Management, Fire Marshal.....	4
Total Incidents for the Past Five Years.....	5
Arrest Demographics.....	6
Arrests by Type of Crime.....	7
Alcohol and Drug Incidents.....	8
Assault.....	10
Burglary and Theft.....	12
Sex Offense.....	13
Other Crimes.....	15
Traffic Accidents.....	17
Citations and Warnings	19
Assists and Alarms.....	20
Service Calls.....	21
Crime Prevention Programs.....	22

To the Campus Community:

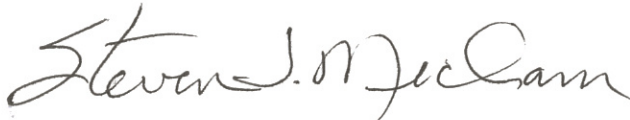
As we have reviewed the activity statistics of the USU Police Department for the 2013 calendar year we continue to be grateful for the safe and peaceful environment we enjoy at Utah State University. In 2013 we saw a 12.5% decline in the total number of incidents responded to from 2,861 in 2012 to 2,503 in 2013. This is the lowest number of incidents since 2007. This decline was nearly across the board in categories reported on. We are particularly pleased with a significant decrease (38.6%) in the total number of burglaries and thefts reported. We also saw a 23.8% decrease in the number of "Other Crimes" reported to the department. We attribute this reduced crime rate to community self-awareness and an outstanding partnership between the USU Police Department and our campus citizens.

There are two areas where we saw an increase in cases reported that cause us concern. The total number of alcohol and drug offenses went up 19.5%. Of particular concern is a 55% increase in the number of Minor in Possession of Alcohol offenses that we handled. That number went up from 38 in 2012 to 59 in 2013. While these numbers are only a fraction of drug and alcohol incidents that occur on most campuses our size, and smaller, we are still concerned with the increase. We are well aware that substance abuse can have a devastating effect on the success of students in their academic goals. We continue to work closely with the office of Student Services, Student Health and Wellness, and Housing and Residence Life to educate students on the dangers of substance abuse.

I am proud of the staff of the USU Department of Public Safety. Each is committed to ensuring the safety of our students, faculty, staff and visitors. We encourage our campus citizens to be involved in their own safety and the safety of others by reporting suspicious individuals and circumstances. We cannot meet our mission to provide a safe and peaceful campus without your help.

It is my hope that you find the Annual Report informative and an indication of the commitment of the USU Department of Public Safety to ensuring the safest possible environment. Please feel free to contact any one of us if you have questions or concerns.

Sincerely,



Steven J. Mecham
Executive Director/Police Chief



University Police Department
5800 Old Main Hill
Logan, UT 84322
435-797-1939
FAX: 435-797-3756



University Fire Marshal's Office
5800 Old Main Hill
Logan, UT 84322
435-797-1979
FAX: 435-797-3756



Emergency Management
5800 Old Main Hill
Logan, UT 84322
435-797-0807
FAX: 435-797-3756

WHO WE ARE...

The Utah State University Department of Public Safety was organized in 1981 for the safety and protection of the people and property associated with the University. Thirty years later the department has grown to better serve the 20,000 plus students, faculty, and staff at USU.

The USU Police Department has compiled this annual report in an effort to help faculty, staff, and students better understand crime and its impact on the campus community. While studying the information keep in mind that no crime statistics are completely accurate simply because not all crimes are reported. The reasons for not reporting crimes are many and vary with each crime, community, and victim. Use caution when comparing Utah State University crime statistics with those of other universities since there may be differences in reporting.

Other factors that should be considered when making comparisons are:

- ❖ Density and size of the community population.
- ❖ Climate, including seasonal weather conditions.
- ❖ Effective strength of law enforcement agencies.
- ❖ Attitudes of the public towards crime reporting.
- ❖ Administrative and investigative efficiency of the local law.
- ❖ Cooperation of adjoining and overlapping police agencies.
- ❖ Crimes cleared in the following year.

The USU Department of Public Safety includes 5 divisions: Police, Dispatch, Security, Emergency Management, and Fire Marshal.

POLICE

The Police Division is made up of eleven state-certified full-time police officers. USU Police Officers handle criminal cases within the jurisdiction of Utah State University. Officers also provide free information and services such as personal escorts, key retrieval from locked cars, and jump-starts to name just a few.

The USU Police Department is actively involved in community service including the Special Olympics Torch Run, and in teaching safety and crime prevention to the campus community. For more information on the programs we offer, please visit our website at <http://www.usu.edu/dps>.



DISPATCH

The Dispatch Division is made up of one full-time dispatch coordinator and five part-time student dispatchers. The Division operates 24-hours a day, 365 days a year. Dispatchers handle all communication and dispatching of officers and also monitor burglary and fire alarms in buildings on and off campus. The dispatch center services an emergency 911 number and several emergency phones located on campus.



SECURITY

The Security Division is made up of six part-time student employees whose primary responsibility is to make sure each area, room, and building on campus is properly locked and secured along with lights being turned off and windows being closed. These officers have no police powers and report all suspicious activity to police officers who handle all investigations.



BOMB SQUAD

One of the specialty units within the USU Police Department is the Bomb Squad. The squad has some of the most modern safety equipment available, including a state-of-the-art Robot (remote mobile weapons platform for disposing of hazardous devices). In addition to responding to calls throughout Cache County and surrounding areas, the squad provides displays and discussions at schools and community gatherings. For more information please call Captain Steve Milne at 435-797-1939.



EMERGENCY MANAGEMENT

The Emergency Management Division was developed to better prepare the campus for any major disaster and to ensure the University is compliant with National Incident Management System (NIMS) standards. The division has two areas of responsibility; the Emergency Response Plan and the Community Emergency Response Team (CERT). USU currently has more than 300 trained employees and students in disaster preparedness, disaster fire suppression, disaster medical operations, light search and rescue, disaster psychology, and team organization through the CERT program. This program is available to any individual in the campus community. Anyone interested in the CERT program or to obtain a copy of the Emergency Response Plan may contact the USU Police Department at 435-797-1939.

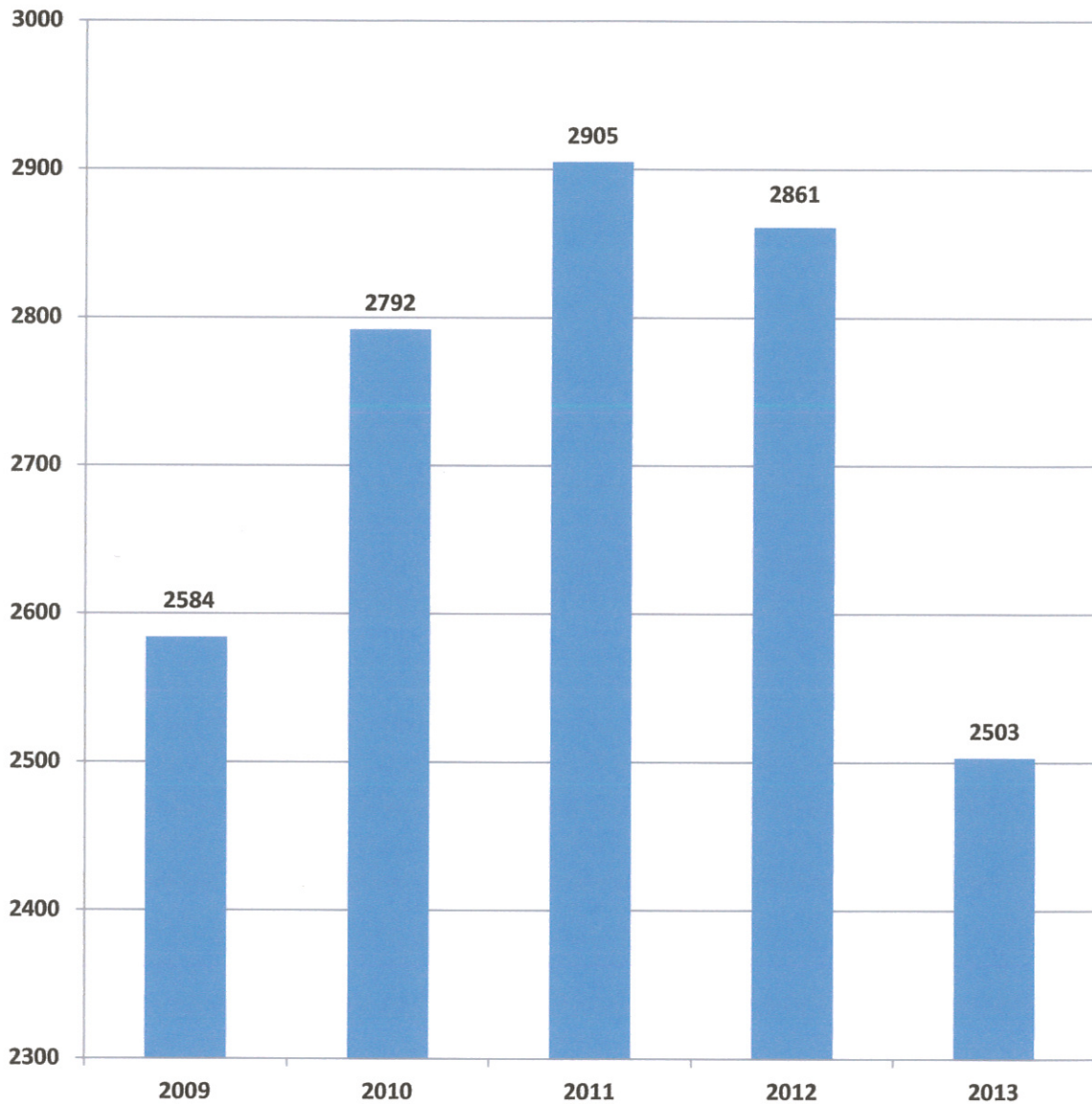


FIRE MARSHAL

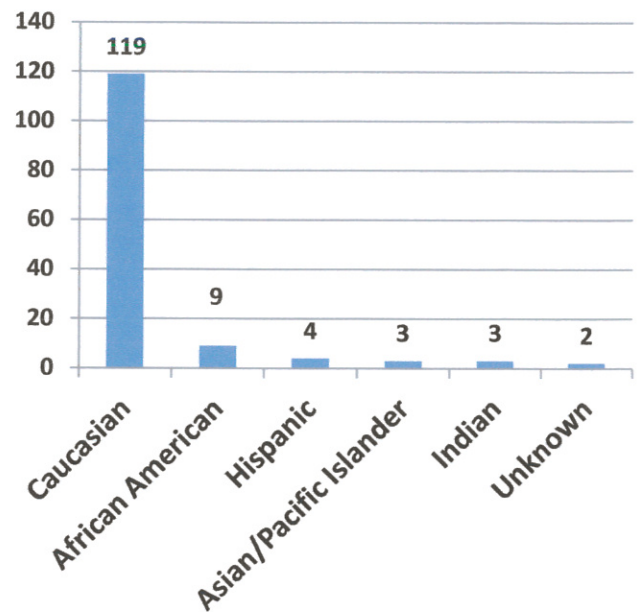
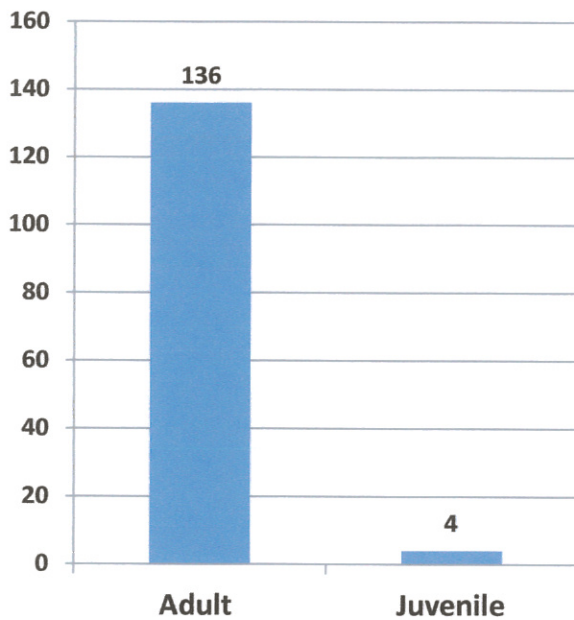
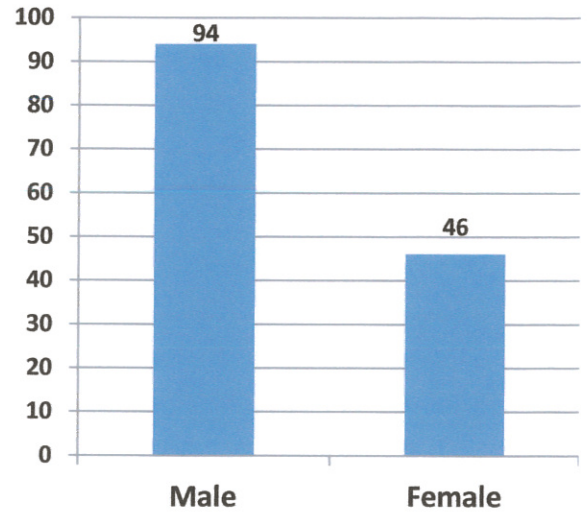
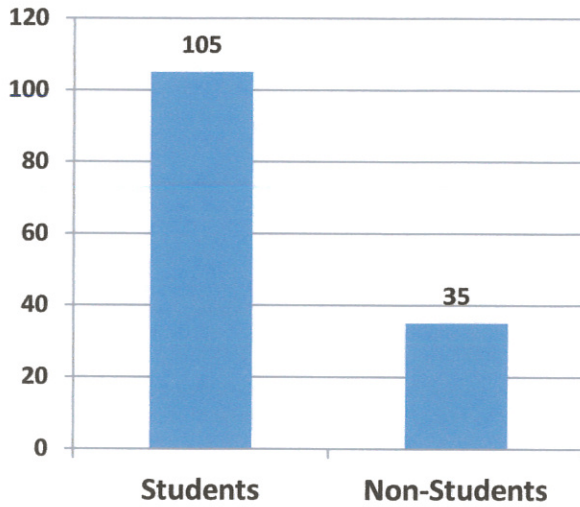
The Fire Marshal Division is made up of three full-time fire marshals whose primary responsibility is to monitor, maintain, and evaluate the fire protection services on campus. They also ensure that the University meets and complies with all state fire codes and regulations and make regular reports to the State of Utah Fire Marshal, University Risk Manager, and offending departments. They perform regular inspections of all campus facilities to detect any possible fire hazards in an effort to reduce the loss of University equipment and property. The inspections conducted by the Fire Marshal's Office also reduce the insurance obligation of the University.



TOTAL INCIDENTS FOR THE PAST FIVE YEARS

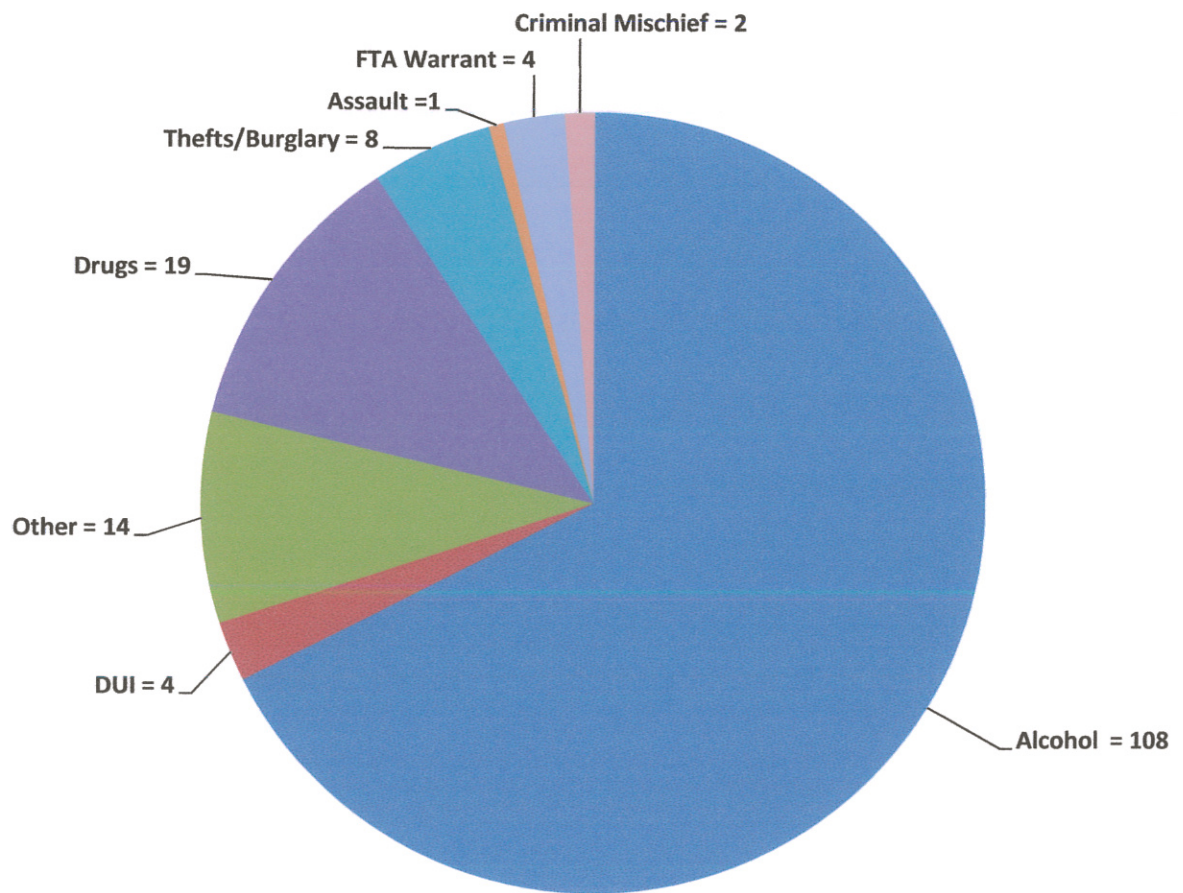


ARREST DEMOGRAPHICS



TOTAL PERSONS ARRESTED IN 2013	140
TOTAL PERSONS ARRESTED IN 2012	110
TOTAL PERSONS ARRESTED IN 2011	112
TOTAL PERSONS ARRESTED IN 2010	104

ARRESTS BY TYPE OF CRIME



DUI = Driving under the influence

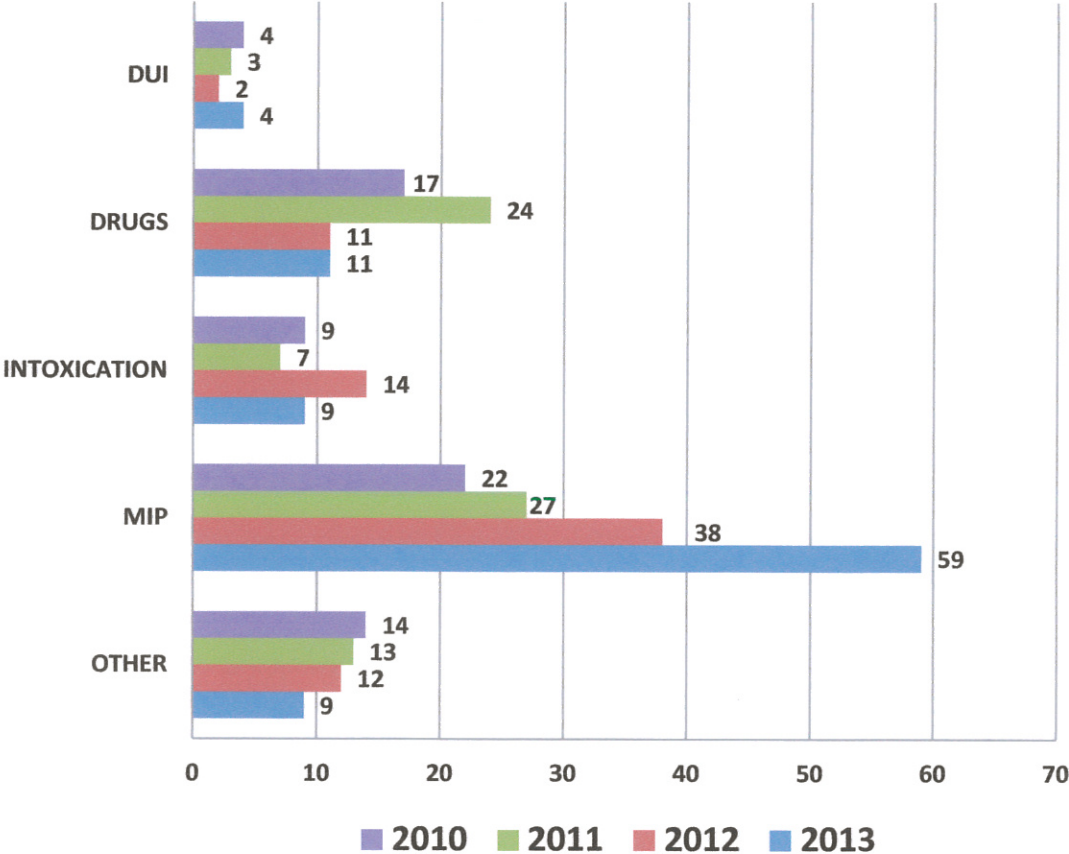
Alcohol = Minor in Possession of Alcohol (MIP), Intoxication, Open Container, and Unlawful Consumption

Other = Minor with Tobacco, Trespassing, Violation of University Regulations, Traffic Violation, Public Peace, Obstructing Police

FTA = Failure to Appear

NOTE – The difference between the number of persons arrested, and arrests by type of crime is due to some individuals being charged with more than one crime at the time of arrest.

ALCOHOL AND DRUG INCIDENTS



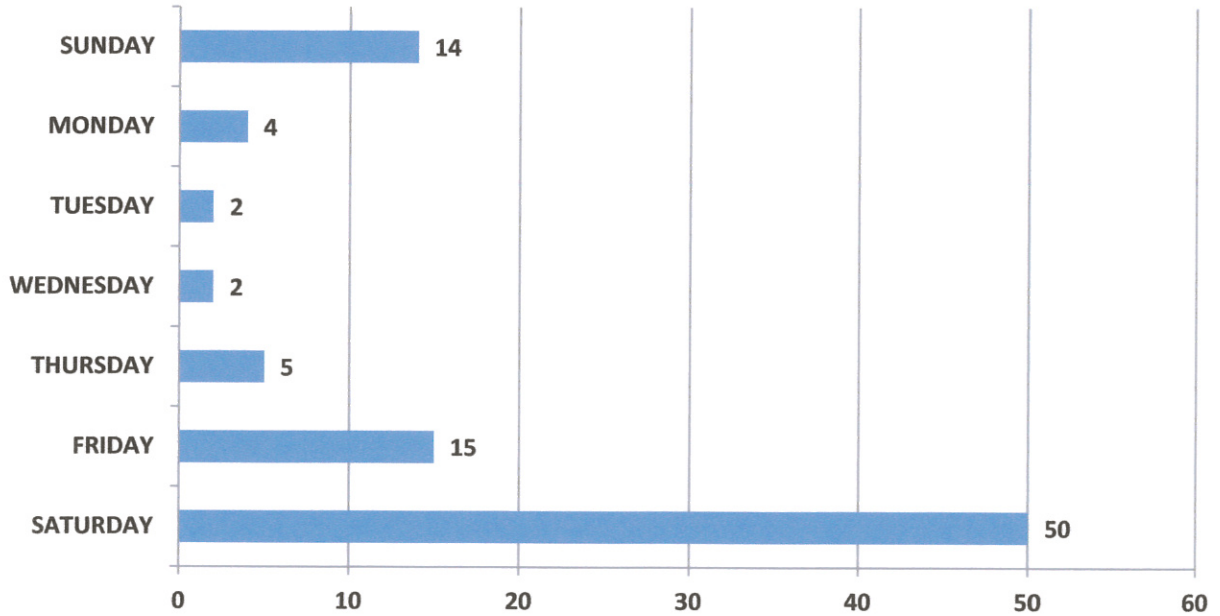
TOTAL OFFENSES IN 2013	92
TOTAL OFFENSES IN 2012	77
TOTAL OFFENSES IN 2011	74
TOTAL OFFENSES IN 2010	66

OTHER = Unlawful Consumption, Violation of University Regulations, Open Container, Supplying to Minors

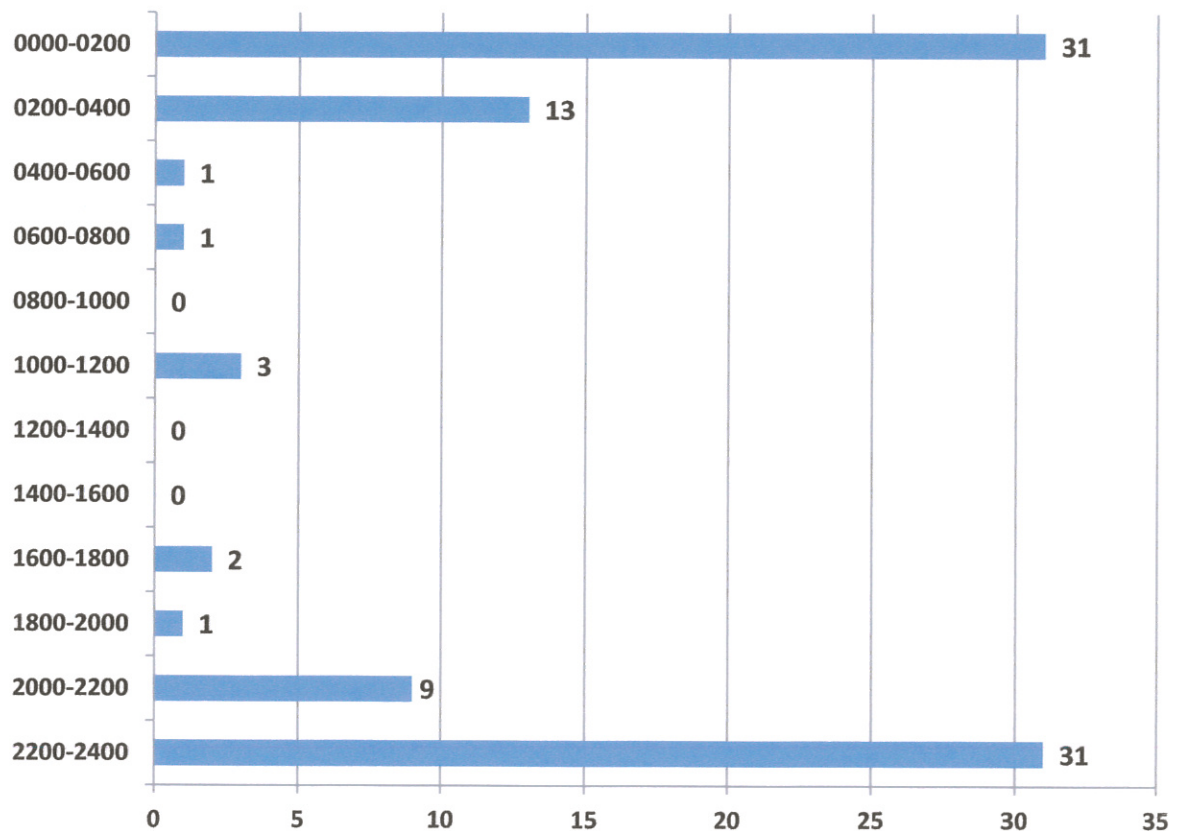
MIP = Minor in Possession

DUI = Driving Under the Influence

ALCOHOL AND DRUG INCIDENTS PER DAY OF THE WEEK



ALCOHOL AND DRUG INCIDENTS PER HOUR OF THE DAY

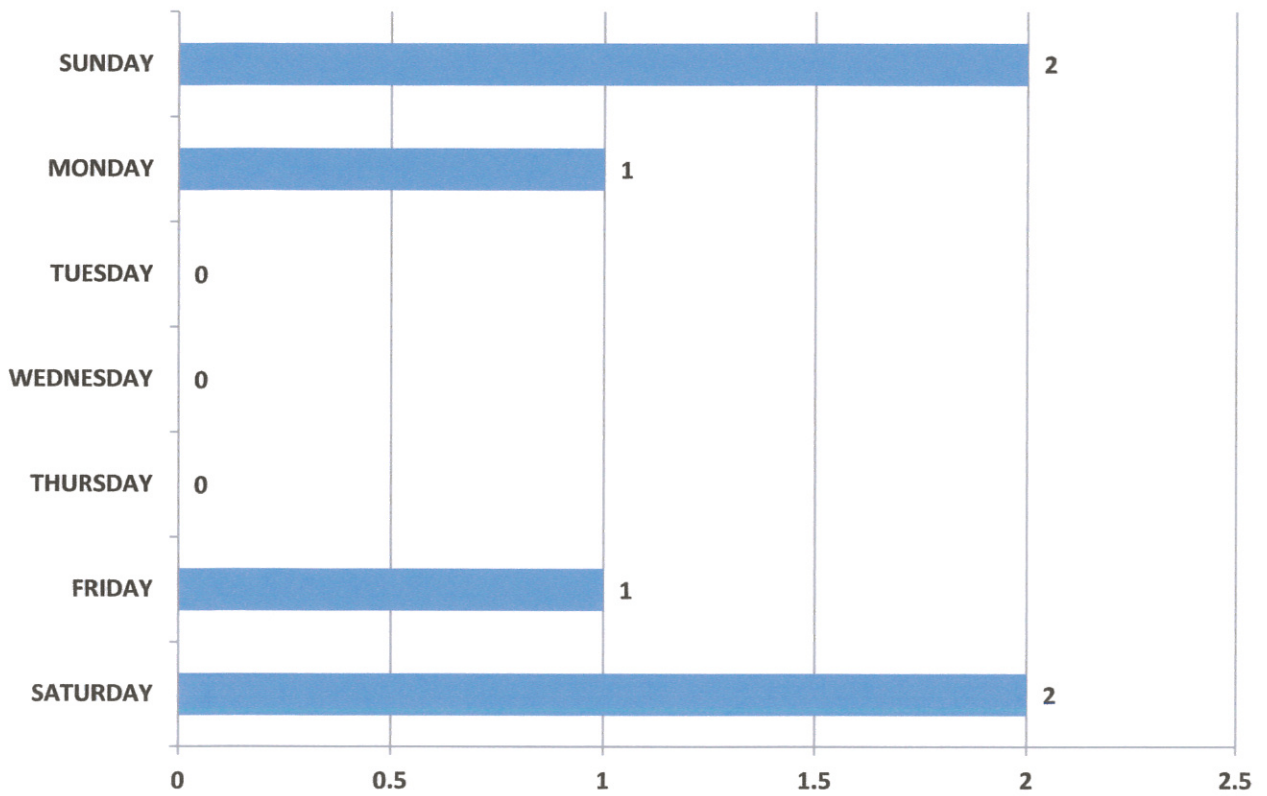


ASSAULT

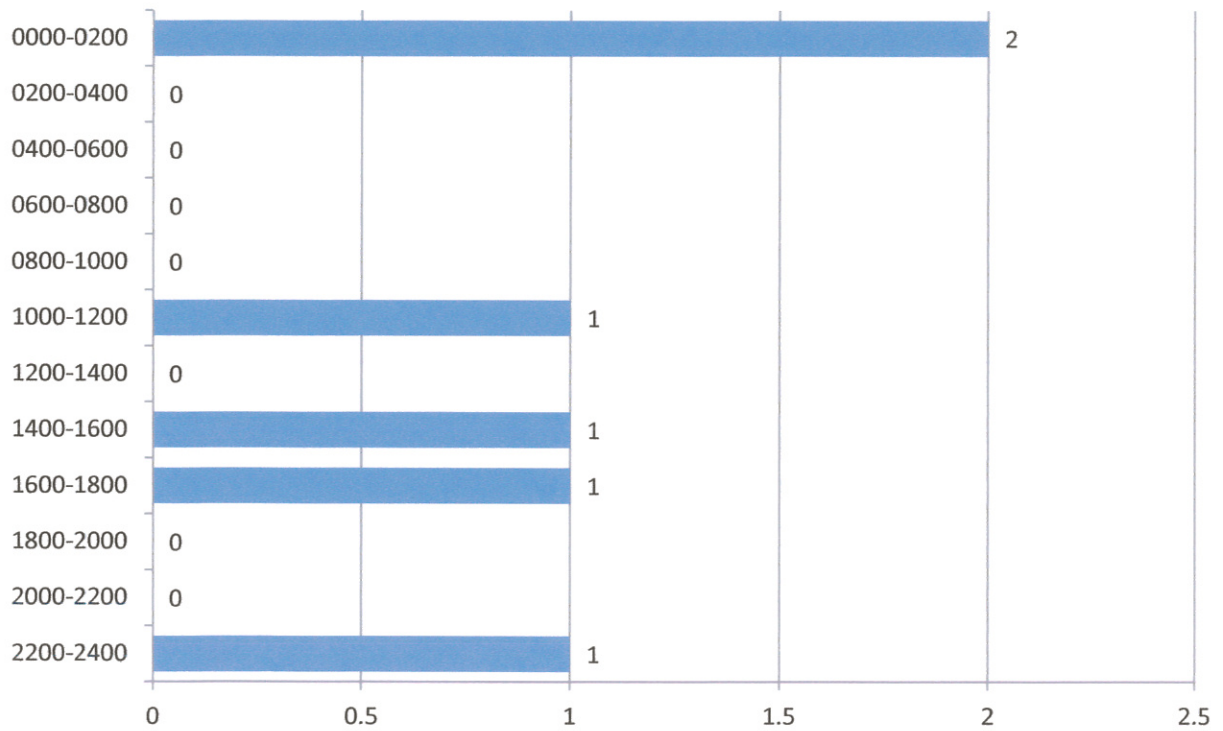


TOTAL ASSAULTS IN 2013	6
TOTAL ASSAULTS IN 2012	4
TOTAL ASSAULTS IN 2011	5
TOTAL ASSAULTS IN 2010	12

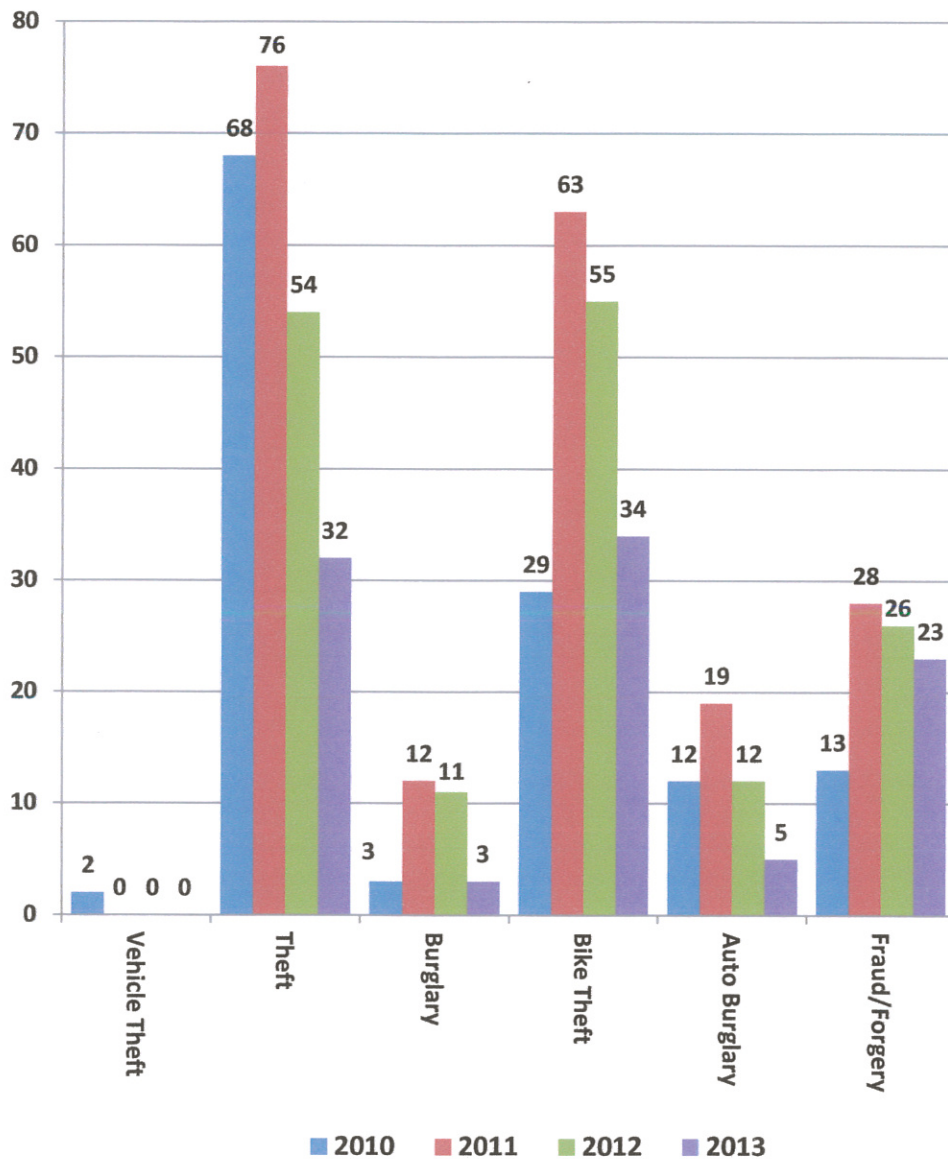
ASSAULTS PER DAY OF THE WEEK



ASSAULTS PER HOUR OF THE DAY



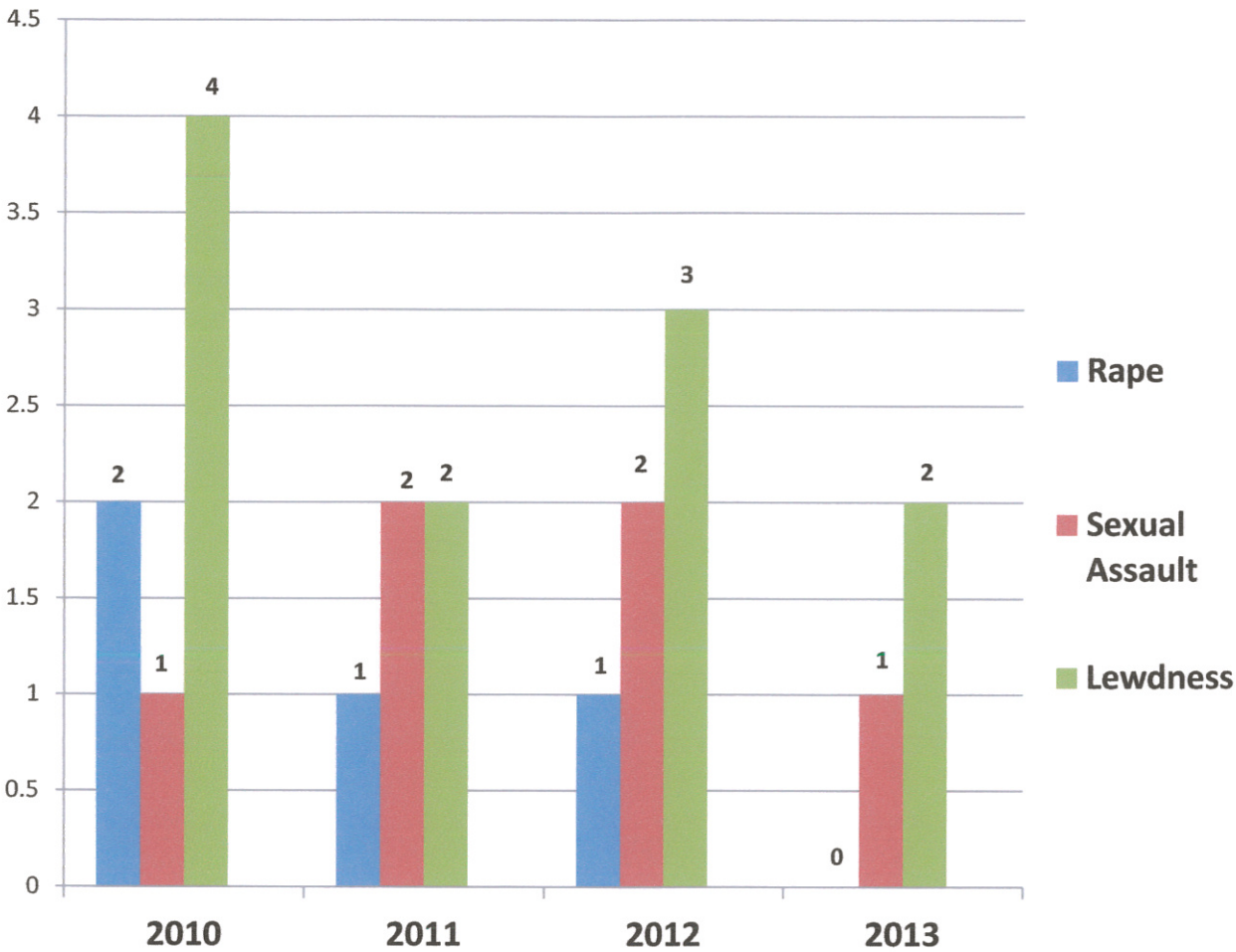
BURGLARY AND THEFT BY TYPE



TOTAL OFFENSES IN 2013	97
TOTAL OFFENSES IN 2012	158
TOTAL OFFENSES IN 2011	198
TOTAL OFFENSES IN 2010	127

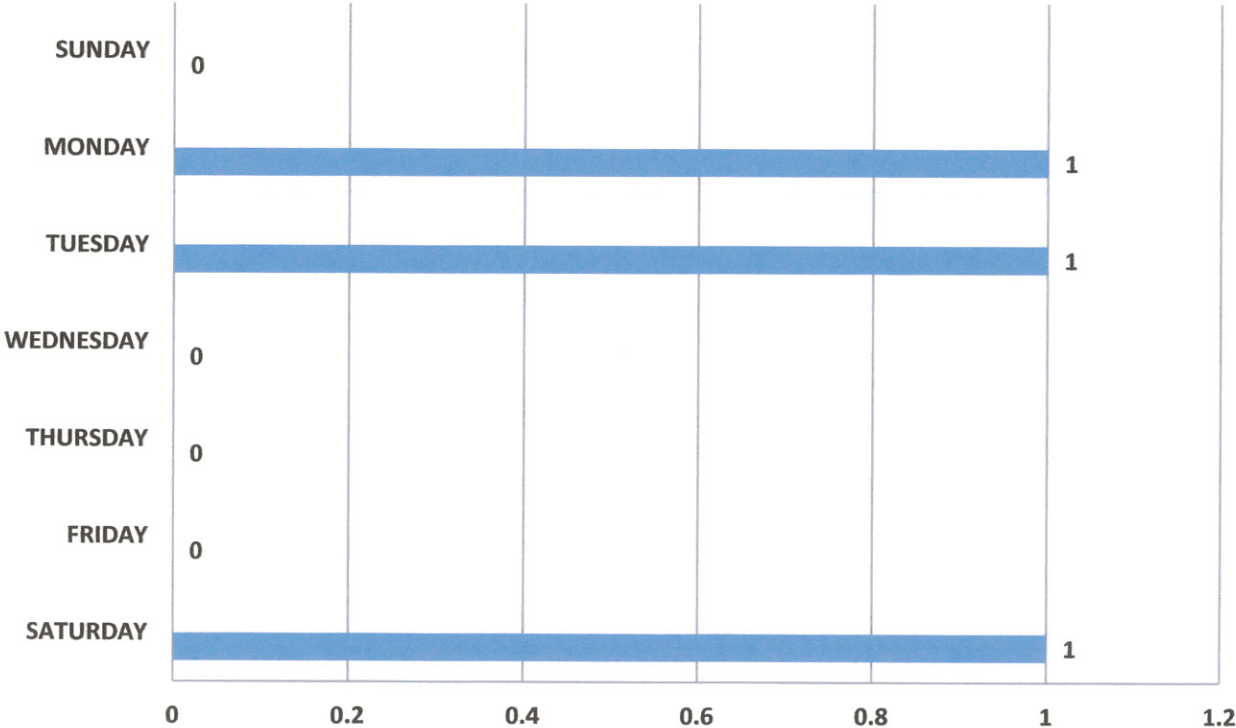
TOTAL STOLEN PROPERTY 2013	\$67,565
TOTAL RECOVERED PROPERTY 2013	\$ 2,955

SEX OFFENSE BY TYPE

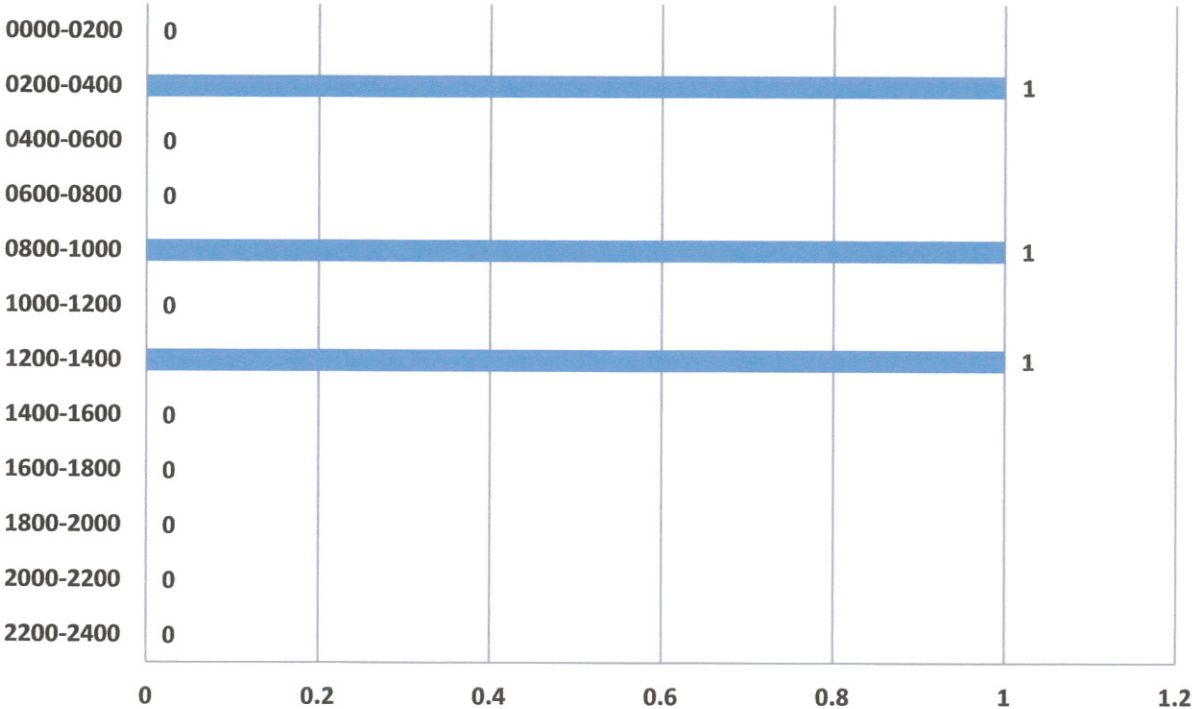


TOTAL OFFENSES FOR 2013	3
TOTAL OFFENSES FOR 2012	6
TOTAL OFFENSES FOR 2011	5
TOTAL OFFENSES FOR 2010	7

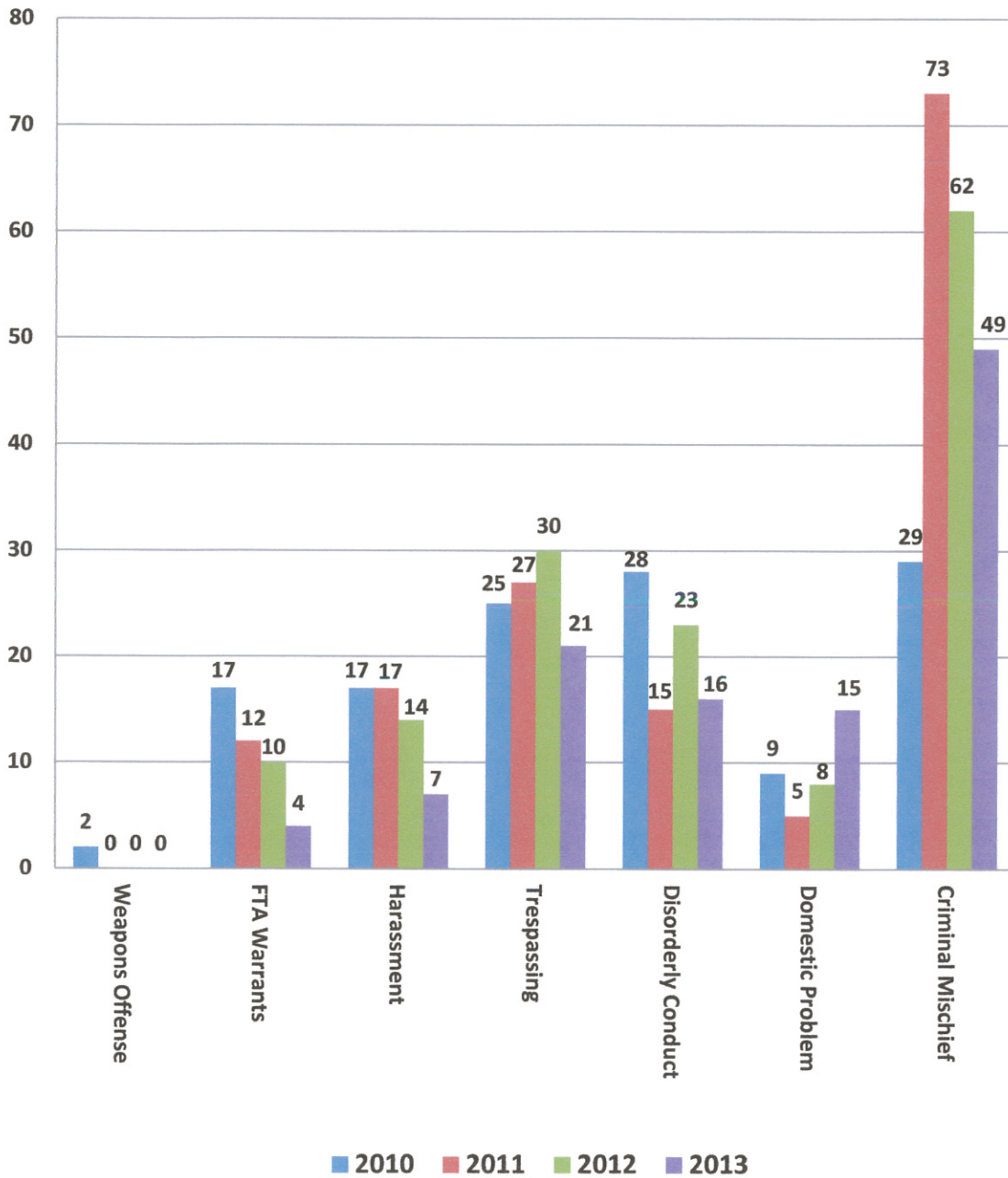
SEX OFFENSES PER DAY OF THE WEEK



SEX OFFENSES PER HOUR OF THE DAY

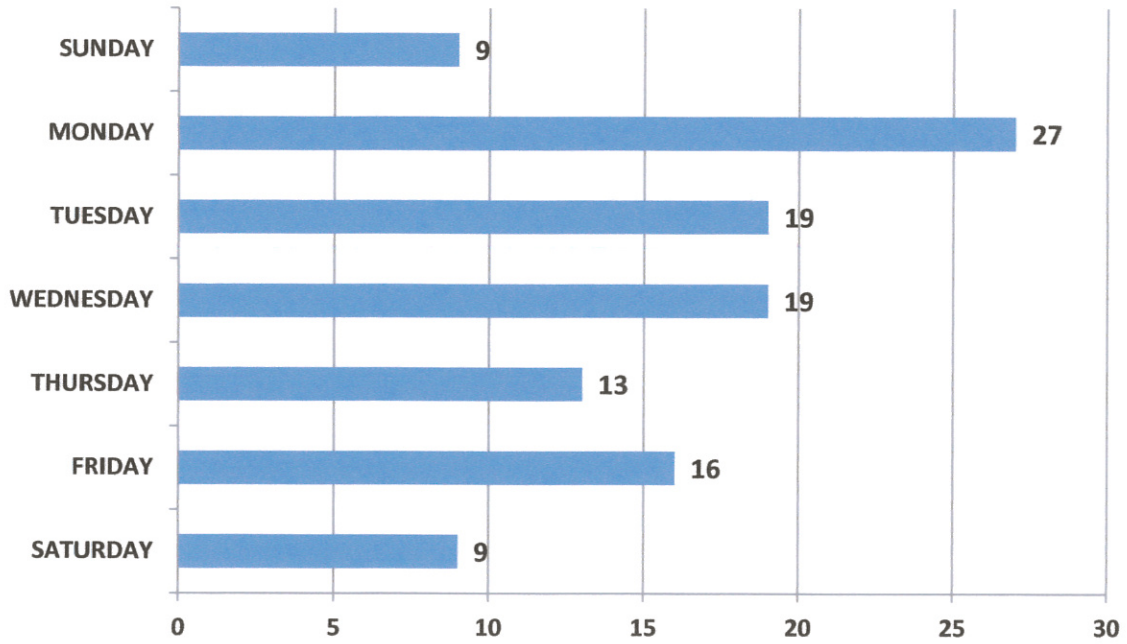


OTHER CRIMES BY TYPE

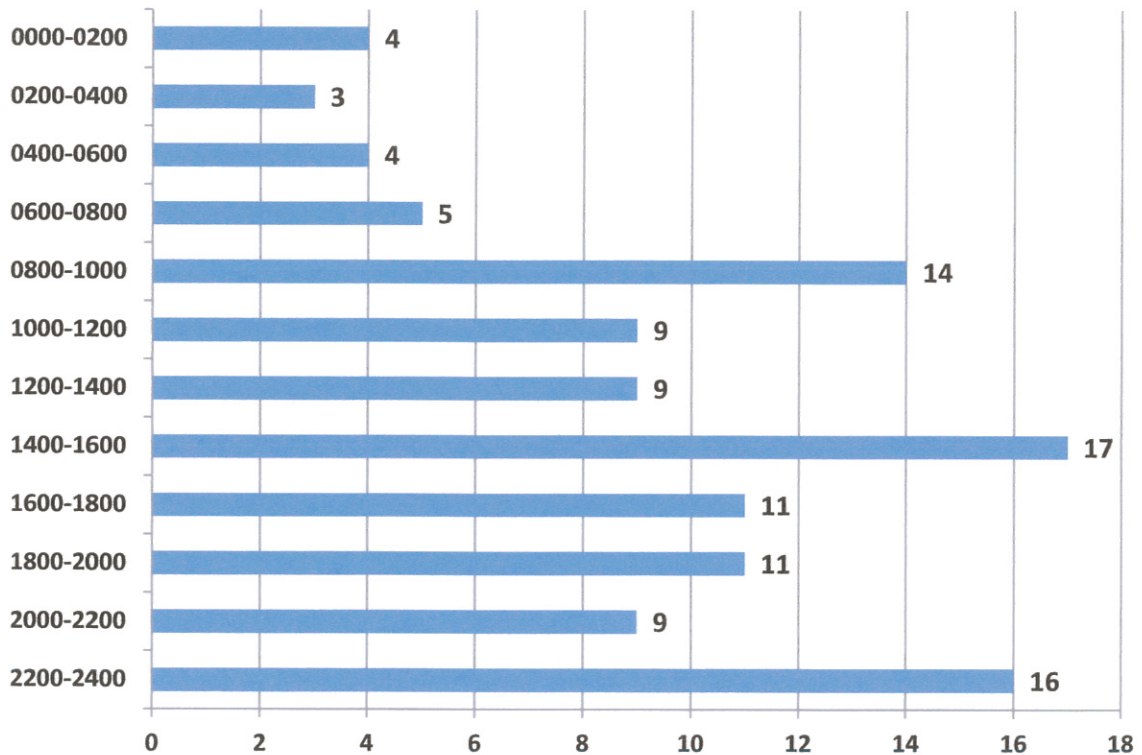


OTHER CRIMES FOR 2013	112
OTHER CRIMES FOR 2012	147
OTHER CRIMES FOR 2011	149
OTHER CRIMES FOR 2010	127

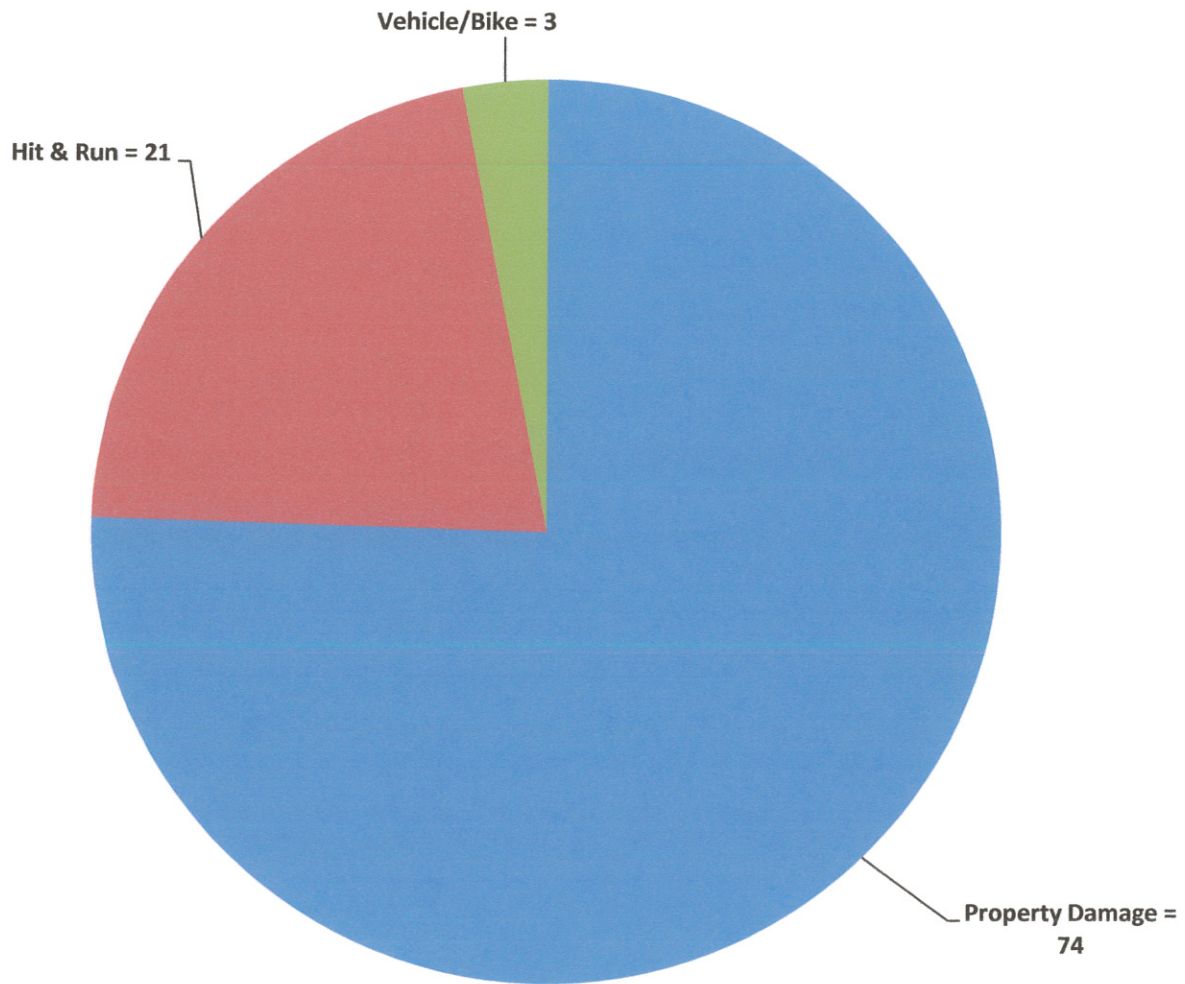
OTHER CRIMES PER DAY OF THE WEEK



OTHER CRIMES PER HOUR OF THE DAY

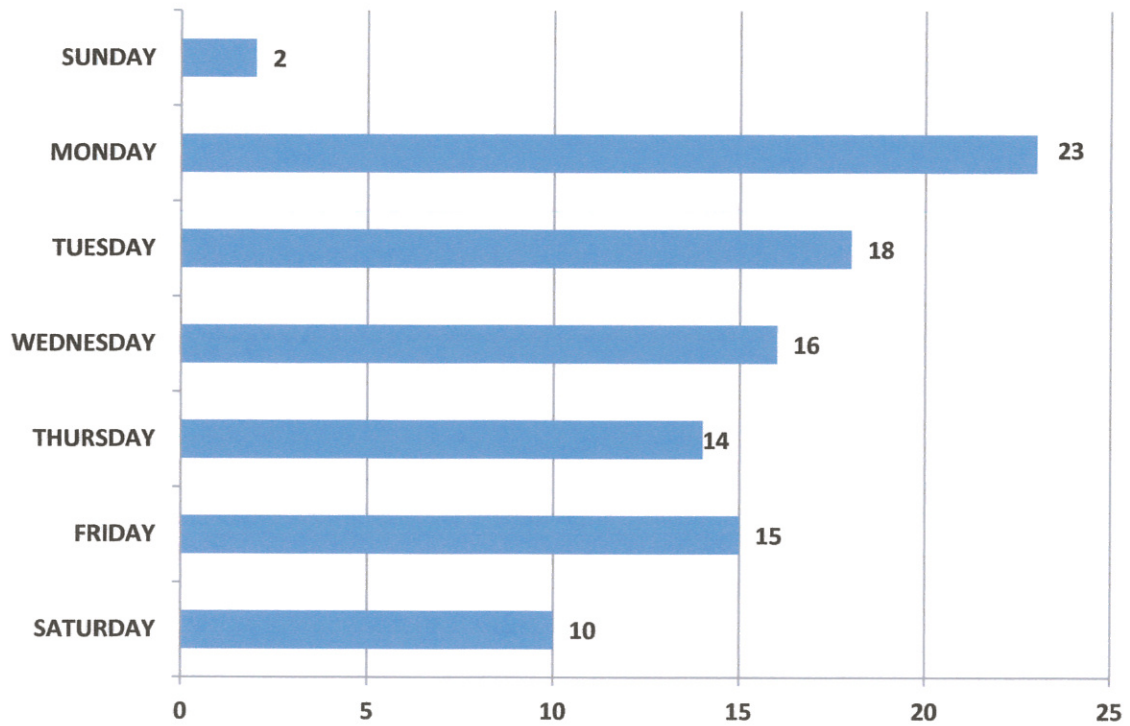


TRAFFIC ACCIDENTS BY TYPE

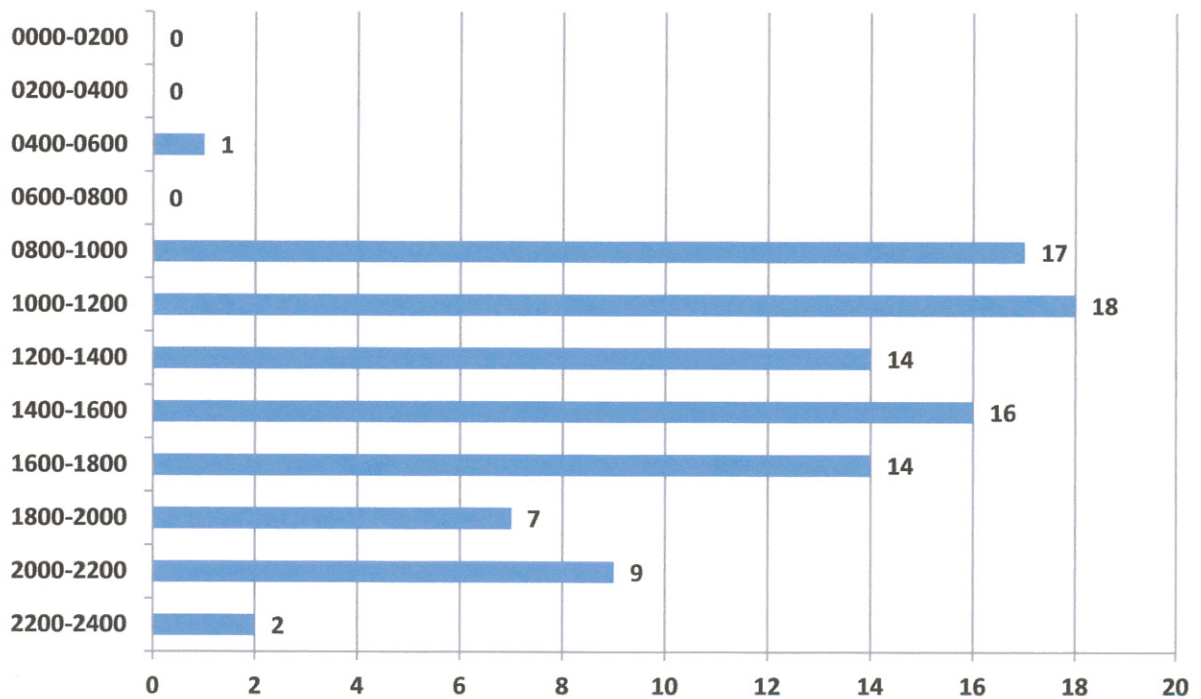


TOTAL ACCIDENTS FOR 2013	98
TOTAL ACCIDENTS FOR 2012	104
TOTAL ACCIDENTS FOR 2011	89
TOTAL ACCIDENTS FOR 2010	98

TRAFFIC ACCIDENTS PER DAY OF THE WEEK

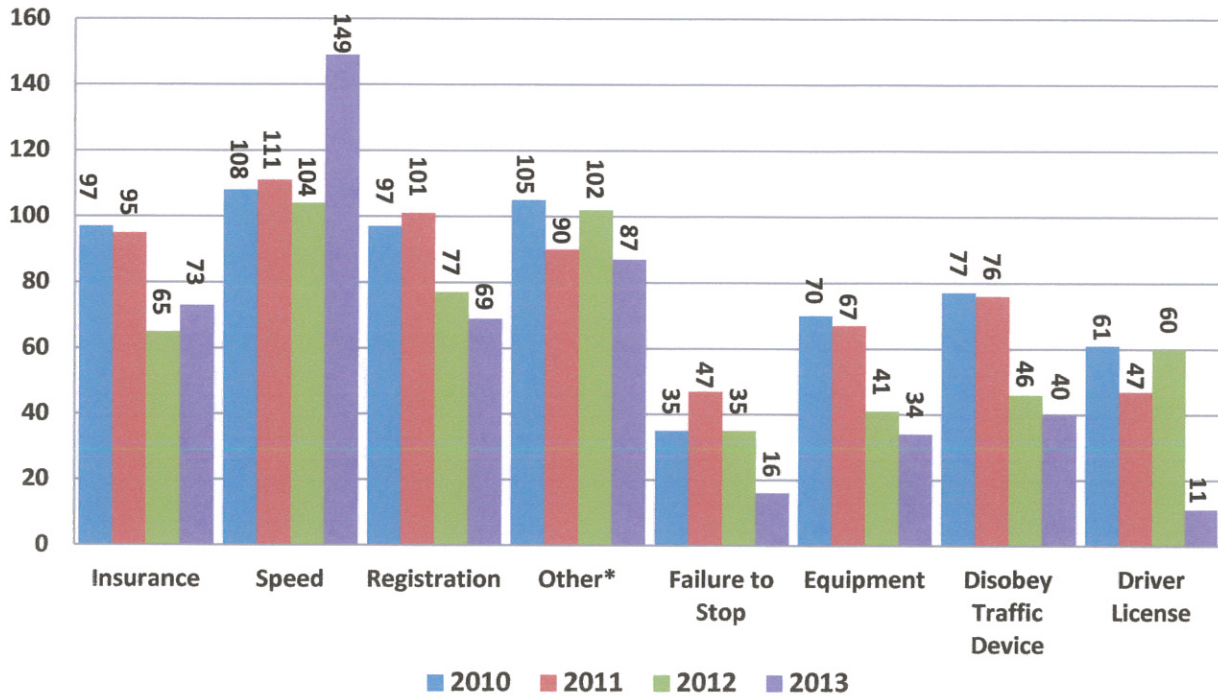


TRAFFIC ACCIDENTS PER HOUR OF THE DAY



CITATIONS AND WARNINGS

BY TYPE



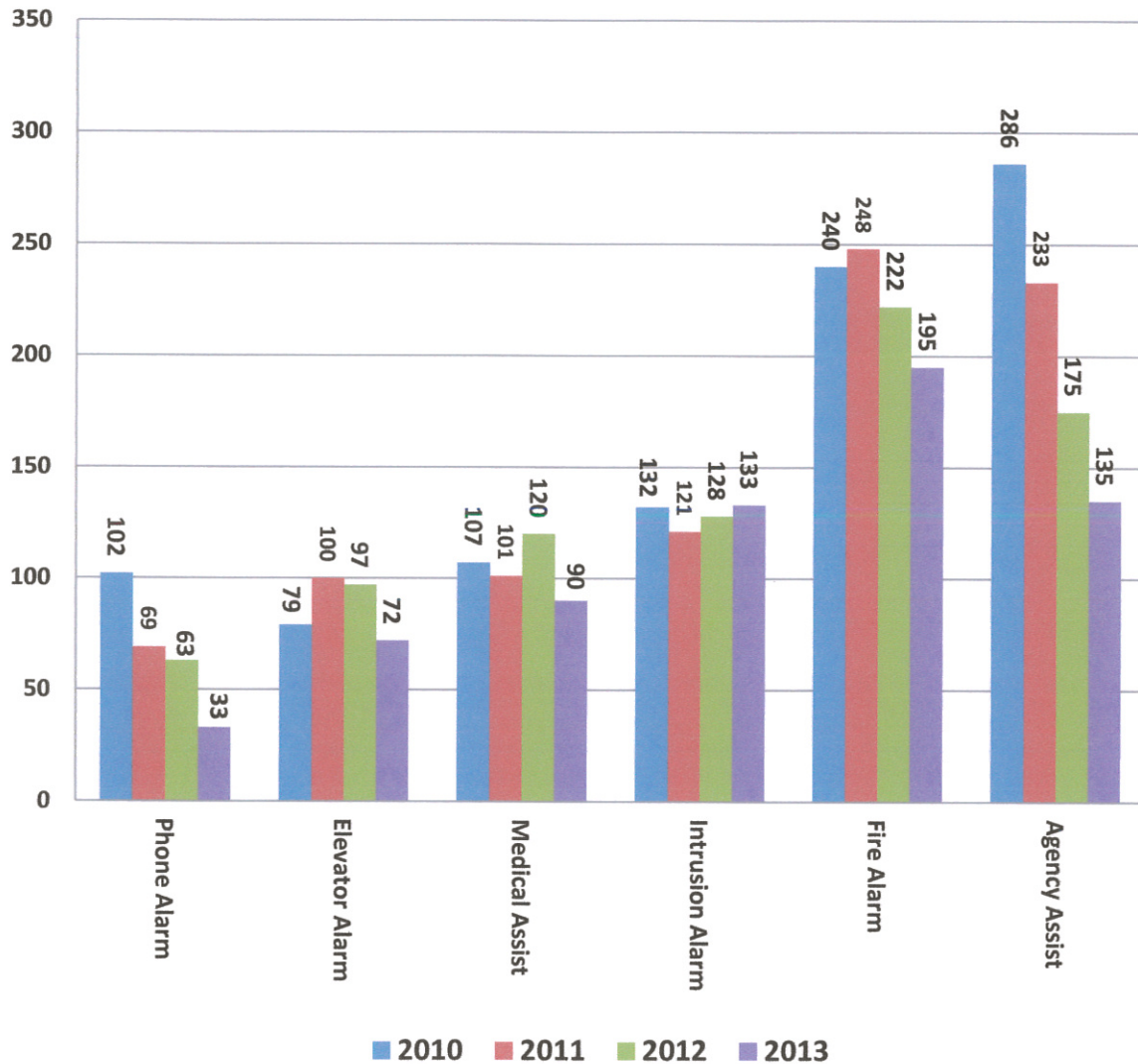
*OTHER – Wrong Way, Failure to Report Accident, Improper Look-Out, Driving Left of Center, Seatbelt Violations

TOTAL CITATIONS FOR 2013	479
TOTAL CITATIONS FOR 2012	530
TOTAL CITATIONS FOR 2011	537
TOTAL CITATIONS FOR 2010	573

TOTAL WARNINGS FOR 2013	942
TOTAL WARNINGS FOR 2012	1131
TOTAL WARNINGS FOR 2011	1310
TOTAL WARNINGS FOR 2010	1958

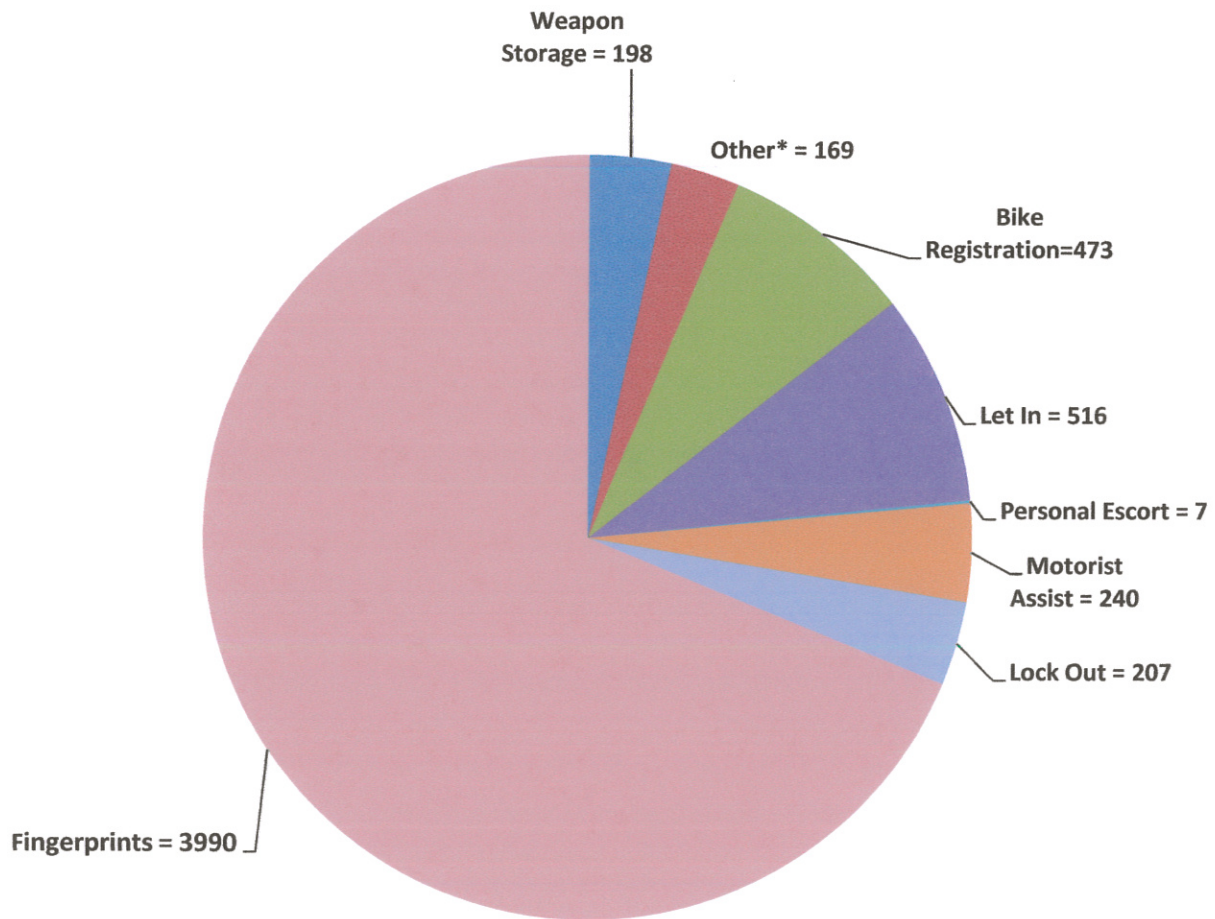
Note – The difference in total citation numbers versus total numbers is a reflection of some citations containing multiple violations.

ASSISTS AND ALARMS BY TYPE



TOTAL ALARMS FOR 2013	658
TOTAL ALARMS FOR 2012	805
TOTAL ALARMS FOR 2011	872
TOTAL ALARMS FOR 2010	946

SERVICE CALLS BY TYPE



TOTAL SERVICE CALLS FOR 2013	5,800
TOTAL SERVICE CALLS FOR 2012	6,177
TOTAL SERVICE CALLS FOR 2011	5,850
TOTAL SERVICE CALLS FOR 2010	4,064

***OTHER** – Includes: Shuttles, Traffic Control, VIN Inspections, Legal Notices, Fix-It Tickets, Money Escort, and Equipment Checks, and Welfare Checks

CRIME PREVENTION PROGRAMS

Class	# of Classes	# of Participants
SOAR- Parents	11	1,250
Connections	7	390
Workplace Violence	41	956
International Students	3	165
Alcohol Awareness	4	350
Youth Safety	2	265
Police Booths	10	N/A
Crime Prevention	1	20
Public Education	7	423
Scouts	4	27
RAD Classes	2	60
RAD Presentations	9	113
CERT Classes	1	10
CERT Refreshers	16	196
Emergency Management	4	N/A
Emergency Exercises	5	N/A
Fire Extinguisher Training	32	683
Fire Drills	58	N/A
Fire Fighter Building Training	15	N/A
TOTAL PROGRAMS	232	4908

USUPD also participated in the Summer Citizens Health Fair, USU A Day, USU Wellness Fair, Week of Welcome Booth, Red Zone Booth, SOAR and Connections Booths, and Emergency Preparedness Fairs.

To obtain extra copies of statistical reports, please contact the USU Police Department at 435-797-1939, or visit our online statistical report at <http://www.dps.usu.edu>