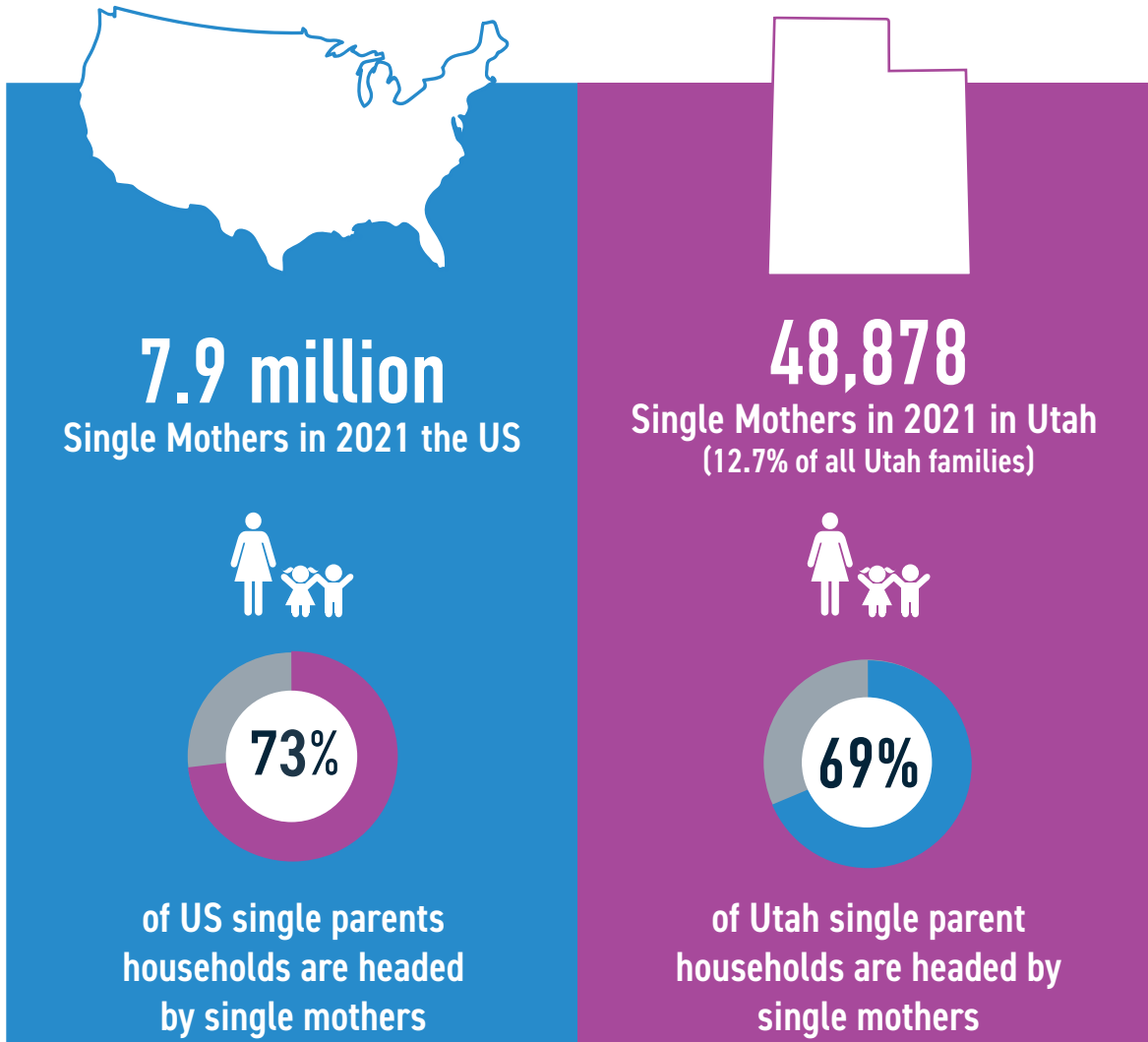



SINGLE MOTHERS IN UTAH


HOW DOES UTAH STACK UP?



Utah counties with the highest percentage of single mother households:

- Grand (7.2%)
 - Weber (6.0%)
 - San Juan (6.1%)
- 

Utah counties with the lowest percentage of single mother households:

- Beaver (1.8%)
 - Daggett (1.0%)
 - Piute (0.0%)
- 

CHALLENGES FACED BY SINGLE MOTHERS

- Economic Disadvantages
- Mental Health Concerns
- Work Instability
- Decreased Time to Devote to Their Children
- Their Own Wellbeing
- Education Barriers



1 in 4

Utah households

with a single mother (25.3%) are living below the poverty level.

Poor mental health

has been associated with an



increased risk of poverty

for single mothers (23.4%), compared to married mothers (4.7%).



The **median income** among Utah single mothers has largely stayed the same for the last decade, from

\$33,100

in 2010



\$37,900

in 2020



WHAT CAN WE DO?

Government/Community Support



Through legislation, strengthen enforcement tools that ensure single mothers receive child support and alimony.

Childcare



Promote childcare reform that caps childcare expenses for single-mother families, and encourage employers to offer childcare reimbursement programs.

Employment



Promote programs focused on improving employment stability for single mothers.

Education



Encourage girls and women to graduate from college and pursue careers in higher-paying industries.

Mental Health



Increase access to affordable mental healthcare.

UTAH WOMEN & LEADERSHIP
Project

UTAH WOMEN & LEADERSHIP PROJECT

Jon M. Huntsman School of Business

Utah State University Extension

uwlp@usu.edu • www.utwomen.org